

Washer - Extractor Variofex 120 T

Standard equipment:

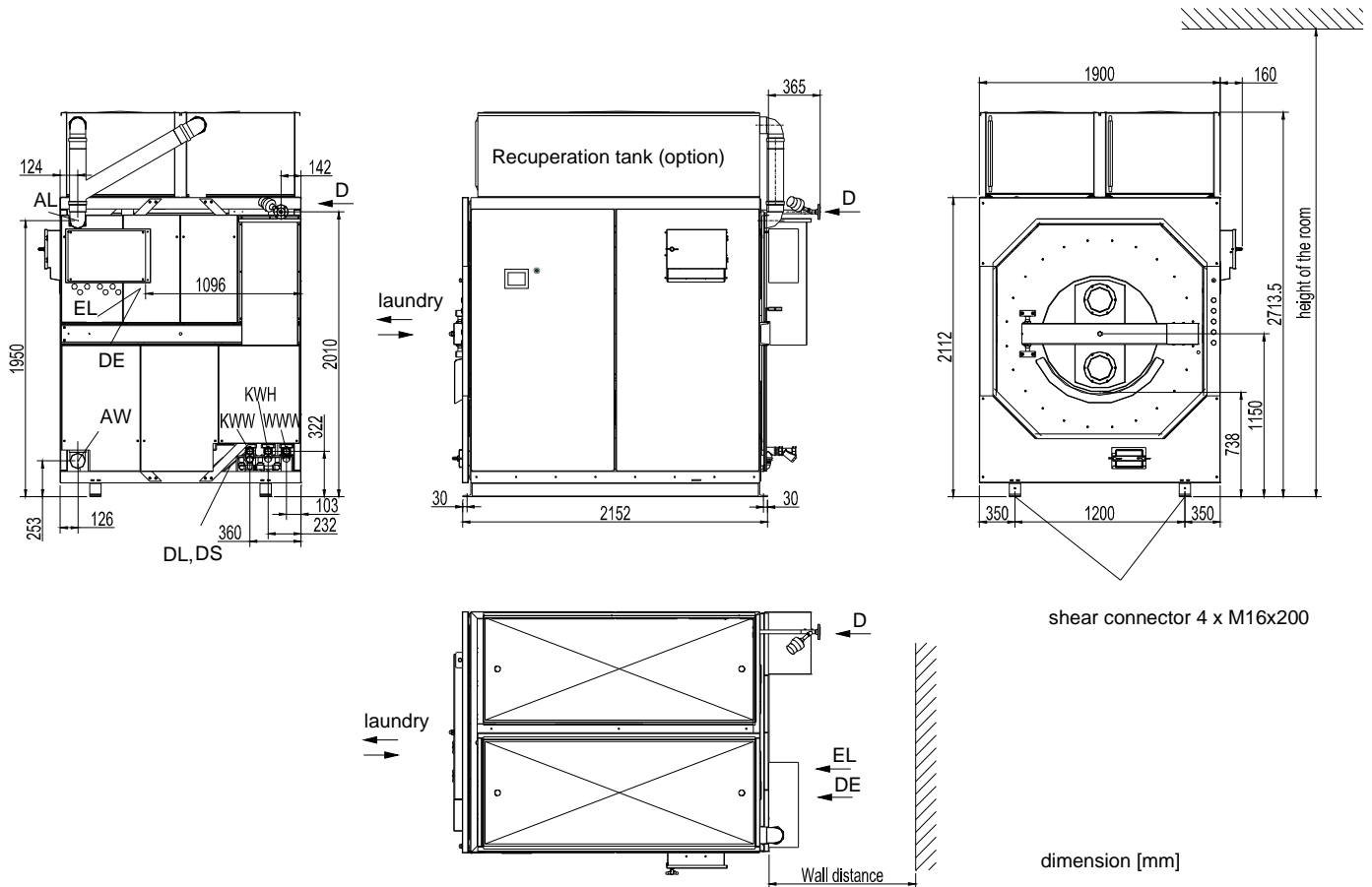
- Steam heating, direct, 3 – 13 bar with air-operated steam valve
- Frequency-controlled drive with infinitely variable drum speed for wash and extraction
- Electronic control with touch screen
- 3 removable flush-in hoppers for liquid and powdery detergents
- 1 connection point and up to 8 control facilities for dosing pumps
- Waste water pump with filter for foreign objects
- Water connections for 1 kind of water
- Colour: S+K - blue
- Operational data collection with interface to external data processing system



Optional Equipments:

- Steam heating, indirect, 3 – 13 bar with air-operated steam valve, without condensate trap
- Water connections for 2,3 kinds of water
- Liquor re-circulation system for WetClean or short liquor processes
- Tilting device
- 4 additional connection points for dosing pumps
- Recovery tanks on the top or connection to an external water recovery system
- PNEUMA-LOAD-System for automatic loading and barrier separation
- Software for programming and changing of washing programmes at customers PC
- Other options on request

Loading capacity: (dry linen)	100 [kg]	110 [kg]	120 [kg]
Filling ratio	1:12	1:11	1:10
Drum cylinder	Diameter 1250 [mm]	Depth 970 [mm]	Volume 1200 [l]
Rotating speed	Washing 15 – 30 [U/min]	Spinning 240 – 760 [U/min]	g-factor spinning 40 – 400
Connected loads (The connected loads will be used shortly. The consumptions are much lower and are depending on wash-programmes)			
Electric Drive motor 25 [kW]	Fuse Drive motor 3 x 50 [A]	Electric heating - [kW]	Fuse Electric heating
Steam heating 3 -13 bar 450 [kg steam / h]	Water intake for any kind [300 l/min] *1	Waste water max. 95 °C 325 [l/min]	Compressed air 5-7 bar 10 [l/min]
Emission	Noise at washing 50 [db(A)]	Noise at max. spinning speed < 70 [db(A)]	Heat rate 7,5 [kW] ²
Weights:	Weight of the empty machine 3000 [kg]	Max. weight with filled tank 5000 kg	Weight of the sea crate 550 [kg]



If “Cold Water Hard” and / or “Hot Water Soft” are not available, please connect to “Cold Water Soft”.

EL	Electric connection, 3x400V / 50Hz	KWW	Cold water soft, female thread G 1 1/2 “
D	Steam, flange DIN 2633, DN20 with oil circulation heating runback (option)	KWH	Cold water hard, female thread G 1 1/2 “, (option)
K	Condensate connection (indirect heating) flange DIN 2633, DN 20 (option) with oil circulation heating run forward(option)	WWW	Hot water soft (60°C-70°C), female thread G 1 1/2 “, (option)
AW	Waste water , HT-pipe DN 100	DS	Detergent connection, 1x diameter 16 mm, 4x diameter 10 mm (Option)
DL	Compressed air, DN 8	DE	Electric connection for detergent device 24 V DC for switching relay at site

Entrance dimensions: Width 2000 [mm] Height 2200 [mm]

Wall distance: minimum 1000 mm,
 PNEUMA-LOAD Ø250: 1000 mm
 PNEUMA-LOAD Ø400: 1200 mm
 Recommended front space: 2000 mm
 Side spacement: not necessary

Room height: minimum 2200 mm,
 PNEUMA-LOAD Ø250: 2750 mm
 PNEUMA-LOAD Ø400: 3000 mm

*1 The minimum floating pressure for all kinds of water is 2.5 bar. Recommended water hardness: 2-6°dH.

*2 Average heat rate at a standard washing programme 60/90°C.

Subject to alterations